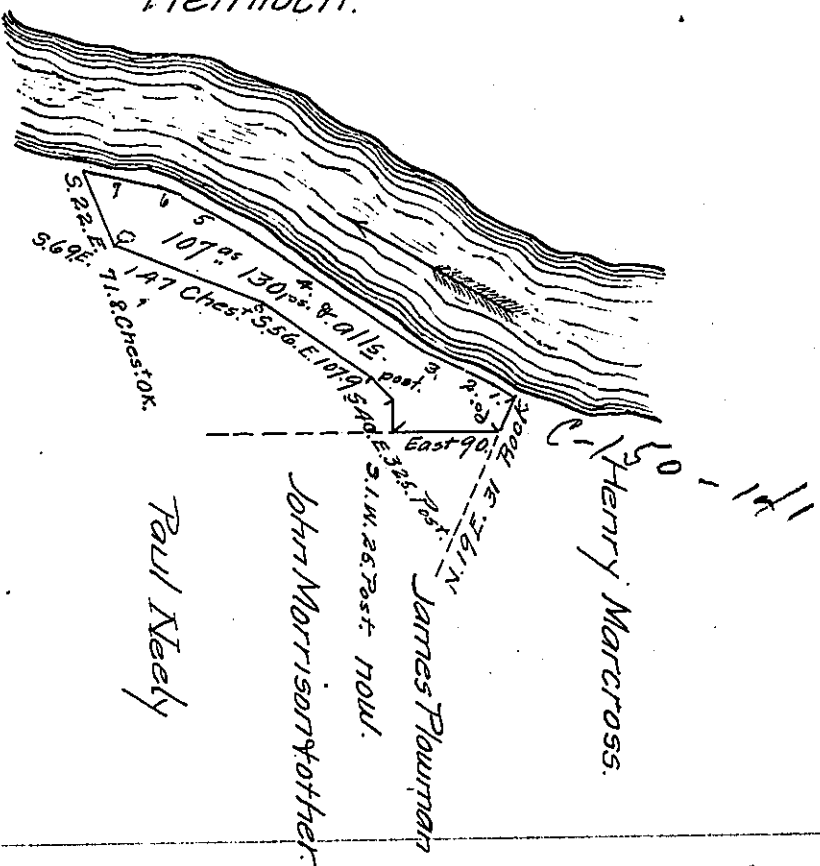


FORM NO. 1.

Courses and distances down river
from Rock 1/3

- N^o 1. N 58 1/2 W. 20. Perches ✓
- " 2. N 71 3/4 W. 40. " ✓
- " 3. N. 60 1/2 W. 26. " ✓
- " 4. N. 56. W. 186. " ✓
- " 5. N. 58 1/2 W. 60. " ✓
- " 6. N. 70. W. 22. " ✓
- " 7. N. 74. W. 71. to
Hemlock.



Draft of a tract of land situate in Cranberry Township, Venango County, East of and adjoining the Allegheny River about three & one half miles above the mouth of French Creek.

Surveyed June 15th 1860 in pursuance of a warrant granted to Paul Neely and Charles E. Taylor dated 23^d day of May AD. 1860

Wth Highlands, C.S.

Hon Wth H. Meim

Surveyor General

IN TESTIMONY that the above is a copy of the original remaining on file in the Department of Internal Affairs of Pennsylvania, made conformably to an Act of Assembly approved the 16th day of February 1833, I have hereunto set my hand and caused the Seal of said Department to be affixed at Harrisburg, this fifth day of April 1907.

Isaac R. Brown
Secretary of Internal Affairs.